

How to Add an Existing Card to Google Wallet



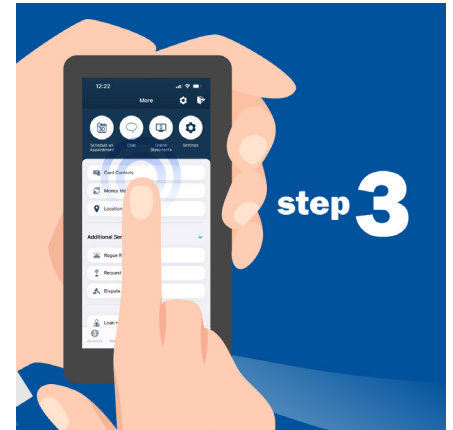
step 1

Download Rogue's Mobile Banking app for Android.



step 2

Open the app. Log in with the username and password you use for Online Banking.



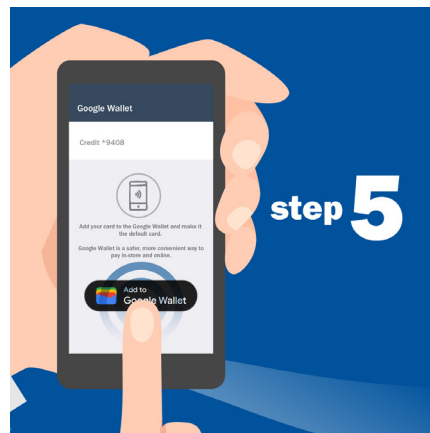
step 3

Tap "More," then select "Card Controls" at the top of the list.



step 4

Tap the "Google Wallet" icon below your card.



step 5

Tap "Add to Google Wallet."



step 6

Choose how you'd like to receive your security token (email or phone number). Then tap "Next."



Enter the security token you received and tap “Next.”



Tap “Continue.”

Success! You’ve added your card to Google Wallet.